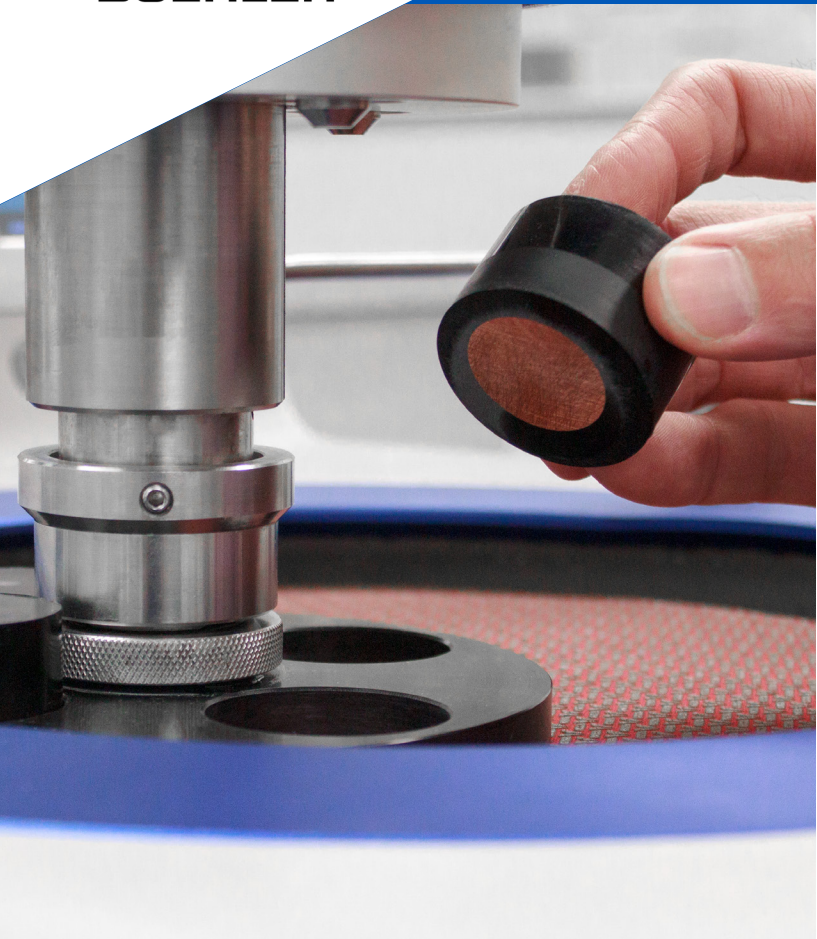




PhenoCure/PhenoCure LP®

General Purpose Compounds



The PhenoCure and PhenoCure LP Powders are wood-flour thermoset resins that provide good edge retention and moderate shrinkage; the ideal general-purpose resin. The PhenoCure LP also provides a lower hazard level with improved curing behavior and shrinkage.

Consistent Performance

Trust in the quality of your mounts and avoid costly rework. Both the PhenoCure and PhenoCure LP have tight quality criteria to ensure repeatable curing results.

Reduce Hazards

Reduce hazard exposure for lab users and improve lab safety with Buehler's PhenoCure LP product.

Easy Recognition

Quickly recognize samples and keep your lab organized by color coding your mounts. PhenoCure is available in 3 colors allowing for color coding by different sample types.

Application Recommendations

General purpose phenolic resin. Ideal for soft and ductile material. Also used as a backing media with alternative products, such as EpoMet®, when high edge retention is required, such as with very hard materials.

Ordering Information

PhenoCure

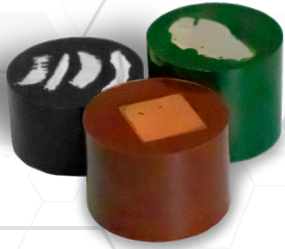
Size	Black	Red	Green
5 lbs [2.3kg]	20-3100-080	20-3200-080	20-3300-080
25 lbs [11.3 kg]	20-3100-400	20-3200-400	20-3300-400
40 lbs [18.1 kg]	20-3100-500	20-3200-500	20-3300-500

PhenoCure LP

Size	Black
5 lbs [2.3kg]	20-6100-080
25 lbs [11.3 kg]	20-6100-400
40 lbs [18.1 kg]	20-6100-500



Characteristics



	PhenoCure	PhenoCure LP
Color	Black, Red, Green	Black
Shelf life	2 years	2 years
Hardness (Shore D)	~88	~88

Instructions for Use

System	Temp	Pressure	Type	Heating and Cooling Times			
				1 in [25mm]	1.25 in [30mm]	1.5 in [40mm]	2 in [50mm]
SimpliMet® 4000	350°F [180°C]	290 bar 4200 PSI	Single 220V	1:30/2:30	3:00/2:30	4:30/2:30	6:00/5:30
			Single 115V	1:30/1:30	3:00/2:00	4:00/3:00	5:00/4:00
			Duplex 220V	2:00/2:30	2:30/2:30	4:30/2:30	3:30/7:00
			Duplex 115V	2:00/2:00	3:00/2:30	4:00/3:00	5:00/4:30

- Heat/Cool time is in minutes and does not include ramp up time
- Due to variable voltages, heating time may vary. Voltages above 120VAC will take less time to heat.

Making a Mold

1. Set mounting press parameters
2. Raise the bottom ram to the top of the mold cylinder.
3. Swab both the bottom ram and upper ram with Release Agent
4. Place sample in the middle of the bottom ram.
5. Lower ram and add mounting material.
6. Push down and lock the mold closure by turning clockwise 45°.
7. Start Cycle
8. When the cycle is completed rotate the closure 45° counter-clockwise to the stop.
9. Raise ram until the ram lifts the mold closure and mount



Safety Precautions

Review the Safety Data Sheet (SDS) and the label of product carefully prior to use. SDS can be found at www.buehler.com/safety-data-sheets.php

Storage Information

- Store in a cool dry environment 59°F - 95°F (15°C - 35°C)
- Keep container closed when not in use.
- Avoid moisture.



**BUEHLER Worldwide Headquarters
North America-South America Offices**
41 Waukegan Road
Lake Bluff, Illinois 60044-1699 USA
P: 800 BUEHLER (800-283-4537)
P: 847-295-6500
www.buehler.com | info@buehler.com

BUEHLER Germany
info.eu@buehler.com

BUEHLER France
info.eu@buehler.com

BUEHLER United Kingdom
info.eu@buehler.com

BUEHLER China
info.cn@buehler.com

BUEHLER Japan
info.japan@buehler.com

BUEHLER Asia-Pacific
info.asia@buehler.com