

BUEHLER®

OmniMet®

IMAGE ANALYSIS APPLICATIONS SOLUTIONS

86-3850 Inclusion Rating Module

- **Designed for the Accurate Determination of Oxide and Sulfide Inclusion Content in Steel According to ASTM E1245-00**
- **Analysis is Run Over a User Defined Number of Fields**
- **Automated Measurement Assures Ease-of-Use, Repeatability and Reproducibility**
- **Impressive Report Generated in Microsoft® Excel in Just a Few Mouse Clicks**



BUEHLER

The 86-3850 Inclusion Rating Module has been designed for use with either the OmniMet® Express or the OmniMet® Enterprise and provides analysis of inclusions in ferrous metals according to the requirements of ASTM E1245-00

The ASTM E1245 test method describes the determination by image analysis of statistics for the area and length of sulfides and oxides as well as area percent measures, mean free path and the average number of intercepts.

The ASTM E1245 standard recommends that the analysis is performed over a minimum of 100 fields of measurement; as such, a motorized stage is recommended but not mandatory.

Automated Analysis and measurement of inclusions provides a number of benefits:

- Improved rating accuracy compared to the comparison chart method
- Less operator fatigue
- Improved repeatability

Additional Advantages with the 86-3850 Inclusion Rating Module for the OmniMet® Express and Enterprise:

- The Microsoft® Excel based ASTM E1245 reports may be saved in the OmniMet PC or to a networked drive, e-mailed or printed
- All images are calibrated and may be archived in the OmniMet database and retrieved later

- Professional reports showing images and databased information are easily generated in Microsoft® Word® using the built in OmniMet Report Generator*

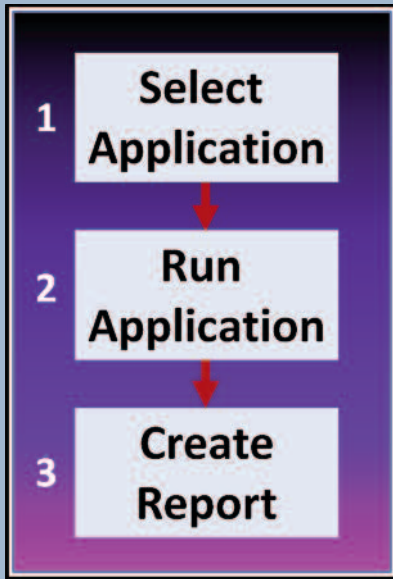
Industry Use:

Customers needing to assess the internal cleanliness of rolled steel

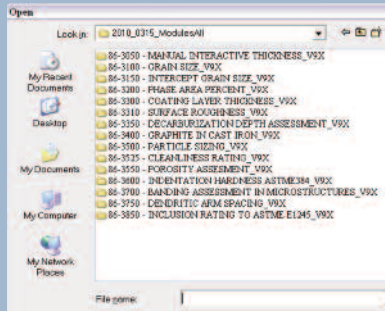
Running the 86-3850 Inclusion Rating Module is as simple as 1-2-3!

**The built in Report Generator is available in version 4.0 and later OmniMet® Express and OmniMet® Enterprise*

With the OmniMet® Applications Solutions Simplicity is the Essence



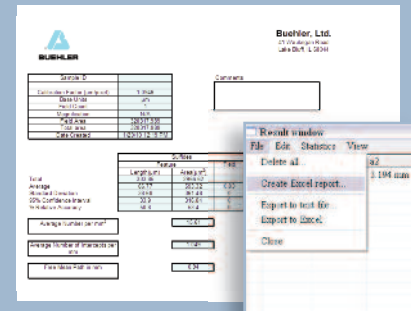
Step 1.
Select the application from the folder.



Step 2.
Push the "Run multifield" button to run the analysis for as many fields as needed. Open the results window to see the data collected.



Step 3.
Run the OmniMet application macro to generate the desired report.



The OmniMet application macro quickly generates a professional report for inclusion assessment according to ASTM E1245 and can be easily customized with your company logo and contact information.

Buehler continuously makes product improvements; therefore, technical specifications are subject to change without notice.

© 2010 BUEHLER®, a division of Illinois Tool Works, Inc. Printed in U.S.A. 3M0105 FN01190 Rev. 1 *For metallurgical consumables produced by BUEHLER®
© 2010 Microsoft Corporation. All rights reserved.

BUEHLER
BUEHLER®, a division of Illinois Tool Works, Inc.
– **Worldwide Headquarters**
41 Waukegan Road • P.O. Box 1
Lake Bluff, Illinois 60044-1699 USA
Tel: (847) 295-6500 • Fax: (847) 295-7979
Sales: 1-800-BUEHLER (1-800-283-4537)
www.buehler.com
Email: info@buehler.com

BUEHLER GMBH - European and MESA Headquarters
In der Steele 2 • 40599 Düsseldorf
Postfach 16 03 55 • 40566 Düsseldorf
Telefon: (49) 211 974100 • Telefax: (49) 211 9741079
www.buehler-met.de
Email: info@buehler-met.de

BUEHLER FRANCE
Téléphone: 0800 89 73 71
Télécopie: 0800 88 05 27
www.buehler.fr
Email: info@buehler.fr

BUEHLER UNITED KINGDOM
Telephone: 0800 707 6273
Fax: 0800 707 6274
www.buehler.co.uk
Email: sales@buehler.co.uk

BUEHLER CANADA
10 Carlow Court, Unit #2
Whitby, Ontario L1N 9T7
Telephone: (905) 430-4684
Fax: (905) 430-4647
Sales Telephone: 1-800-268-3593
Email: info@buehler.ca

BUEHLER, ASIA-PACIFIC
5/F Vogue Centre
696 Castle Peak Road
Lai Chi Kok, Kowloon
Hong Kong, SAR, China
Telephone: (852) 2307 0909
Fax: (852) 2307 0233