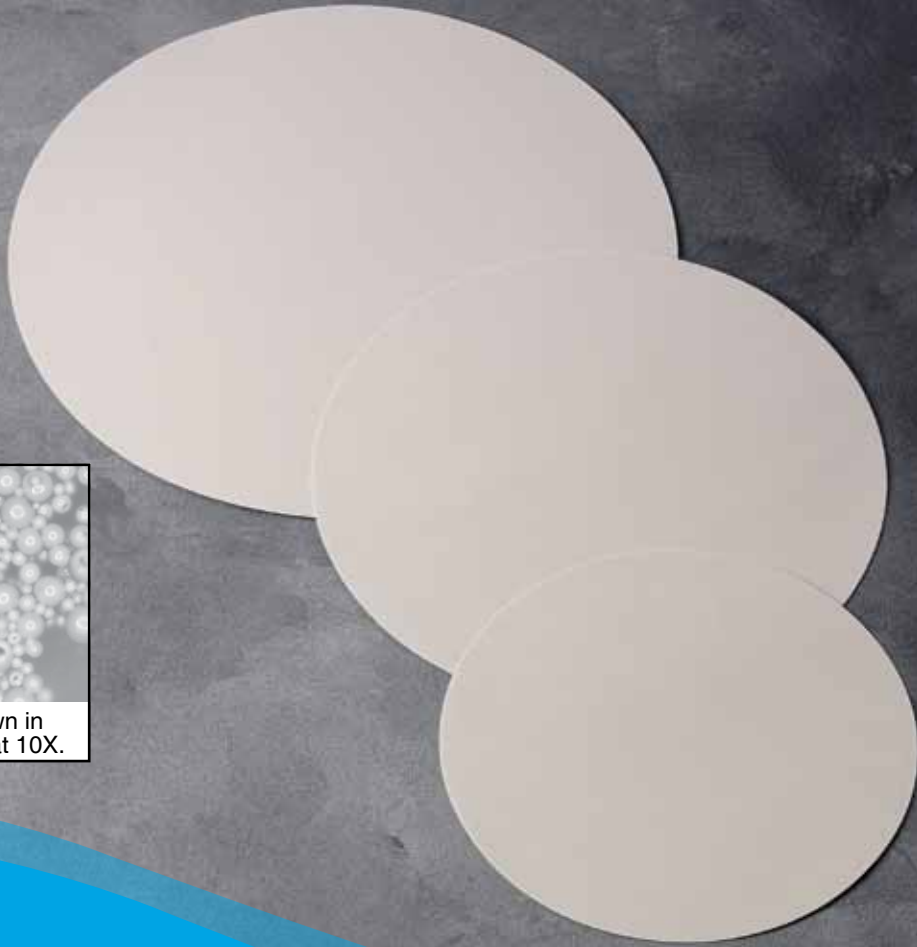
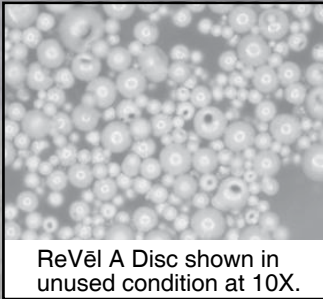


ReVēl Discs



BUEHLER

Excellent Results. Easily Repeatable.™

Reduce Preparation Steps

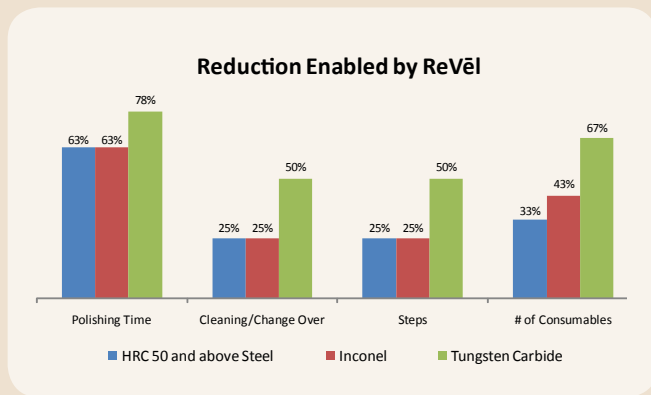
ReVël Discs allow for shorter preparation methods, excellent flatness, low induced deformation and a fine resultant scratch pattern. This specially designed combination of coarser and finer abrasives provides an optimized preparation method - less time, more results.

Productivity and Optimization

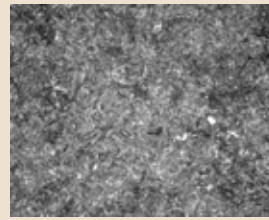
Current available in two forms (A for ferrous materials HRC 50 (481 BHN) and above, ceramics and thermal spray coatings and B for nickel based alloys), ReVël Discs will allow you to prepare specimens, from planar grind to final polish, in 4-7 minutes. Produces best results at 400 RPM and is designed for a useful life of five uses. Each film will replace one to two cloth and diamond suspension or paste steps. Since ReVël Discs use just water, clean up is simplified.

Environmentally Concious

This unique technology uses just water as lubrication, reducing the need to ship diamond suspensions or other lubricants and reduces the amount of products that end up in landfills.



RESULTS



HRC 50 Steel:

- 1 minute on CarbiMet® 2,320 grit Abrasive Paper
- 2 minutes on ReVël A Disc
- 4 minutes 20 seconds on ChemoMet® Pad with MasterMet® Final Polishing Suspension



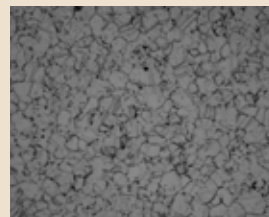
WC-Co:

- 2 minutes on Apex® Yellow DGD
- 2 minutes on ReVël A Disc
- 2 minutes 20 seconds on ChemoMet® Pad with MasterMet® Final Polishing Suspension



Tungsten Carbide:

- 2 minutes on Apex® Yellow DGD
- 2 minutes on ReVël A Disc



Inconel:

- 1 minute on CarbiMet® 2, 400 grit Abrasive Paper
- 2 minutes on ReVël B Discs
- 4 minutes 20 seconds on ChemoMet® with MasterMet® Final Polishing Suspension

Ordering Information

ReVël Discs	8" (203mm)	10" (254mm)	12" (305mm)
Type A	41-10044	41-10045	41-10046
Type B	41-10047	41-10048	41-10049

(5 per pack, magnetic backed)

For best results, prepare specimens at 400 RPM base, 60 RPM head speed, contra direction. Optimal results obtained when disc is used no more than five (5) times.

For a complete listing of consumables, please refer to our Consumables Buyer's Guide. Buehler continuously makes product improvements; therefore, technical specifications are subject to change without notice.



BUEHLER



BUEHLER®, a division of Illinois Tool Works Inc.
 – **Worldwide Headquarters**
 41 Waukegan Road
 Lake Bluff, Illinois 60044-1699 USA
 Tel: (847) 295-6500 • Fax: (847) 295-7979
 Sales: 1-800-BUEHLER (1-800-283-4537)
 www.buehler.com
 Email: info@buehler.com

BUEHLER GmbH - European and MESA Headquarters
 In der Steele 2 • 40599 Düsseldorf
 Telefon: (49) 211 974100 • Telefax: (49) 211 9741079
 www.buehler-met.de
 Email: info@buehler-met.de

BUEHLER FRANCE
 Téléphone: 0800 89 73 71
 Télécopie: 0800 88 05 27
 www.buehler.fr
 Email: info@buehler.fr

BUEHLER UNITED KINGDOM
 Telephone: 0800 707 6273
 Fax: 0800 707 6274
 www.buehler.co.uk
 Email: sales@buehler.co.uk

BUEHLER CANADA
 10 Carlow Court, Unit #2
 Whitby, Ontario L1N 9T7
 Telephone: (905) 430-4684
 Fax: (905) 430-4647
 Sales Telephone: 1-800-268-3593
 Email: info@buehler.ca

BUEHLER, ASIA-PACIFIC
 5/F Vogue Centre
 696 Castle Peak Road
 Lai Chi Kok, Kowloon
 Hong Kong, SAR, China
 Telephone: (852) 2307 0909
 Fax: (852) 2307 0233