

3" IsoMet® & IsoCut® Wafering Blades



BUEHLER

Excellent Results. Easily Repeatable.™

IsoMet® Diamond Wafering Blades

Designed for precise and accurate sectioning of your samples, IsoMet® Diamond Wafering Blades will present accurate cuts without the mess or inconvenience of thicker conventional abrasive cut-off wheels.

IsoCut® Wafering Blades

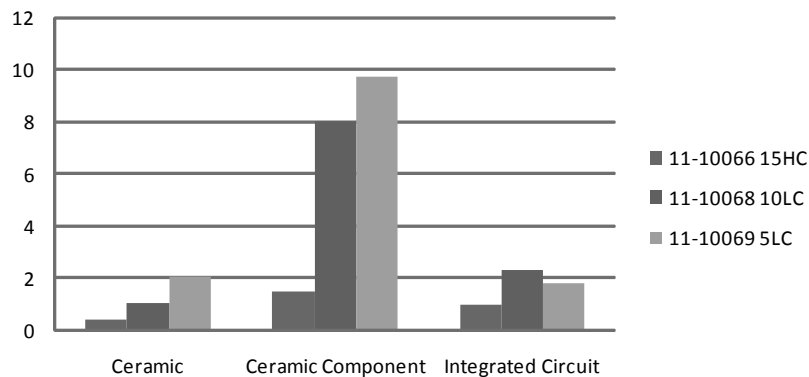
The IsoCut® Wafering Blades were exclusively designed to section iron, cobalt, and nickel base alloys and superalloys. The special formulation of bonded cubic boron nitride can significantly reduce sectioning times on ferrous materials, when compared to conventional diamond blades.

Recently redesigned for improved durability, the 3" (76mm) wafering blades are best used on the IsoMet® LS Saw, with loads of 150 grams or less. This family of blades provides precise and accurate sample sectioning, with the smallest kerf loss in the line.

For optimal life, follow these best practice techniques to follow:

- Always vice samples and dressing sticks - manually feeding into blade will likely result in blade damage
- Dress blades prior to first use
- Encapsulating spheres, unusual shapes and friable materials may simplify sectioning
- Soft materials can build up during cutting and cause blade breakage; such materials should not be cut unattended

Blade Choice Impacts Cut Time



Ordering Information

| | LC | 15HC | 15LC | 10LC | 5LC |
|-------------------------------|----------|----------|----------|----------|----------|
| IsoCut® Diamond Blades | | 11-10066 | 11-10067 | 11-10068 | 11-10069 |
| IsoCut® CBN Blades | 11-10070 | | | | |
| Dressing Sticks | | 11-1190 | | 11-1290 | |

All blades are 3" (76mm) in diameter, have a thickness of 0.007" (0.2mm), and ½" (12.7mm) arbor.
Dressing Sticks are ½ x ½ x 3" (13x13x76mm)

For a complete listing of consumables, please refer to our Consumables Buyer's Guide. Buehler continuously makes product improvements; therefore, technical specifications are subject to change without notice.



BUEHLER



BUEHLER GmbH - European and MESA Headquarters

In der Steele 2 • 40599 Düsseldorf
Telefon: (49) 211 974100 • Telefax: (49) 211 9741079
www.buehler-met.de
Email: info@buehler-met.de

BUEHLER FRANCE

Téléphone: 0800 89 73 71
Télécopie: 0800 88 05 27
www.buehler.fr
Email: info@buehler.fr

BUEHLER UNITED KINGDOM

Telephone: 0800 707 6273
Fax: 0800 707 6274
www.buehler.co.uk
Email: sales@buehler.co.uk

BUEHLER CANADA

10 Carlow Court, Unit #2
Whitby, Ontario L1N 9T7
Telephone: (905) 430-4684
Fax: (905) 430-4647
Sales Telephone: 1-800-268-3593
Email: info@buehler.ca

BUEHLER, ASIA-PACIFIC

5/F Vogue Centre
696 Castle Peak Road
Lai Chi Kok, Kowloon
Hong Kong, SAR, China
Telephone: (852) 2307 0909
Fax: (852) 2307 0233

BUEHLER®, a division of Illinois Tool Works Inc.

– **Worldwide Headquarters**
41 Waukegan Road
Lake Bluff, Illinois 60044-1699 USA
Tel: (847) 295-6500 • Fax: (847) 295-7979
Sales: 1-800-BUEHLER (1-800-283-4537)
www.buehler.com
Email: info@buehler.com