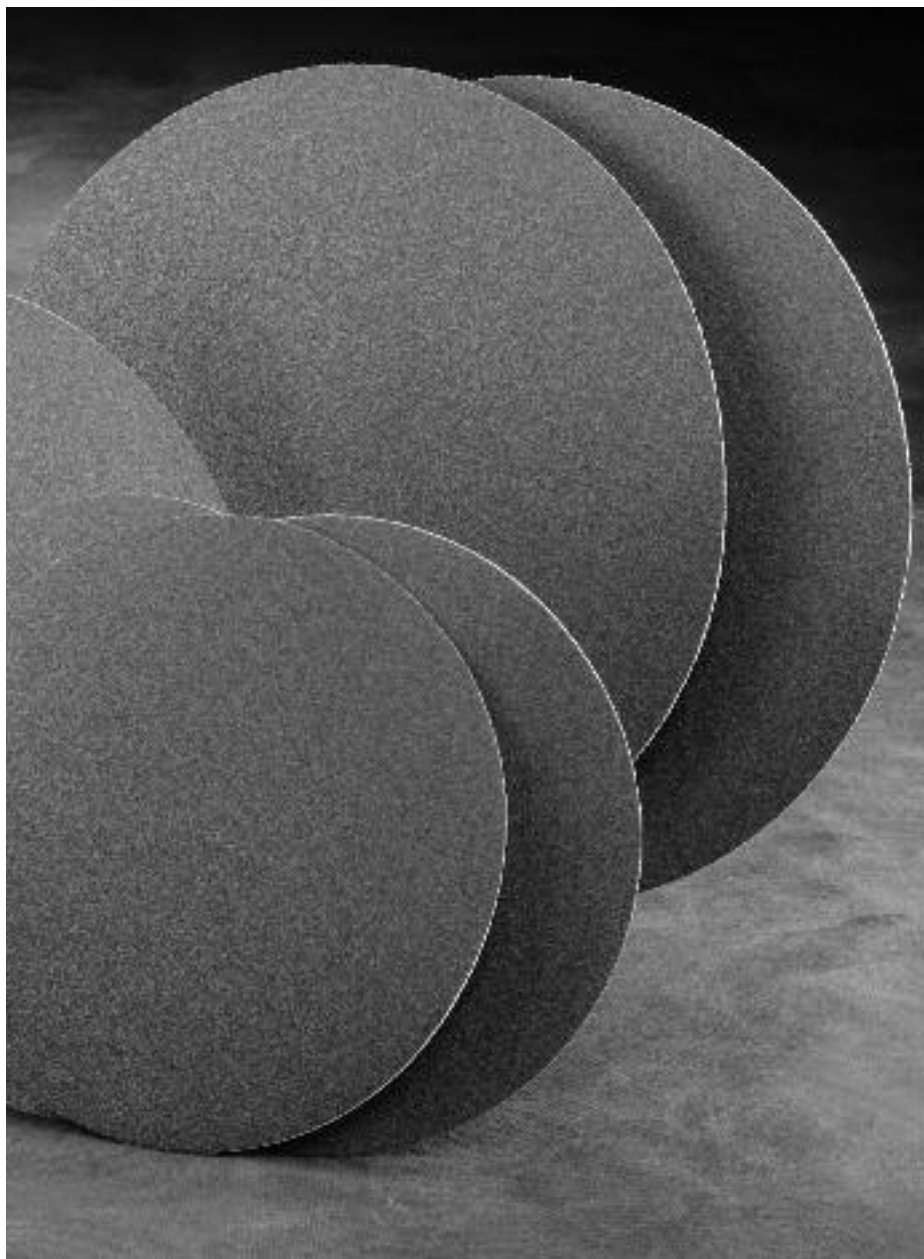


BUEHLER®

PlanarMet™

Al Planar Grinding Discs

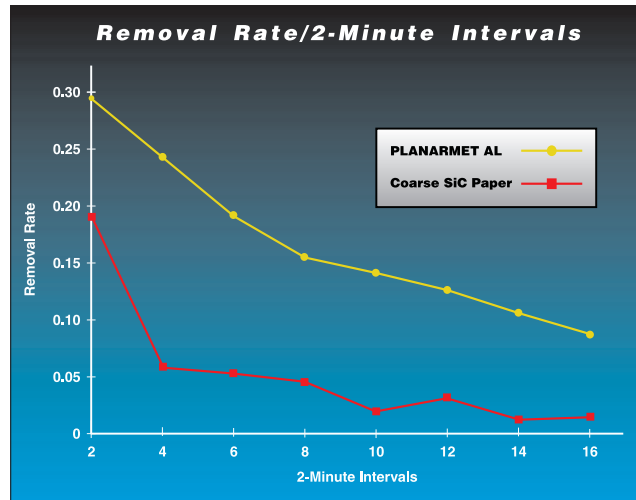
- **Higher Removal Rates than Conventional Papers**
- **Compatible with Apex Quick-Change Magnetic System**
- **Reusable Planar Discs will Last 3 to 5 Times Longer than Conventional Papers**
- **Flexible to Use on All Sample Preparation Systems**



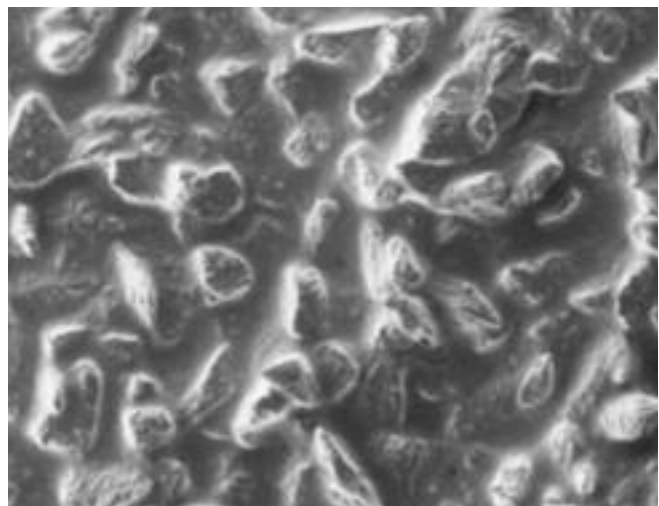
Formulated for ferrous materials and unique alloys, these alumina-based proprietary planar grinding discs were specifically designed to provide higher removal rates over a longer period of time than standard silicon carbide (SiC) papers. Since they last longer than conventional papers, the inconvenience of replacing SiC papers is minimized.

Key Benefits:

- Higher removal rates than conventional papers. Refer to graph showing removal rate comparison on the back of this product brochure.
- Convenience of using a reusable planar grinding disc. On average, these discs will last as long as 3 to 5 conventional papers typically used during the planar grinding stage (usually the coarser grits).
- The confidence of using a fresh new planar grinding disc surface after a finite number of uses.
- Compatible with BUEHLER's new APEX™ Quick-Change Magnetic System.
- Flexibility to use on all manual, semiautomatic, and fully automatic sample preparation systems.



Graph illustrating removal rate in grams per 2 minute intervals.



This surface profile of PlanarMet™ Al demonstrates the tight particle bond, 50x.

Ordering Information

PlanarMet™ Al Planar Grinding Discs

Catalog Number	Description	Size	Quantity
30-6008-020	PlanarMet™ Al Planar Grinding Disc	8" (200mm)	20
30-6010-020	PlanarMet™ Al Planar Grinding Disc	10"(250mm)	20
30-6012-020	PlanarMet™ Al Planar Grinding Disc	12"(300mm)	20

Buehler continuously makes product improvements; therefore, technical specifications are subject to change without notice.



BUEHLER

BUEHLER®, a division of Illinois Tool Works Inc.
– Worldwide Headquarters
 41 Waukegan Road • P.O. Box 1
 Lake Bluff, Illinois 60044-1699 USA
 Tel: (847) 295-6500 • Fax: (847) 295-7979
 Sales: 1-800-BUEHLER (1-800-283-4537)
 www.buehler.com
 Email: info@buehler.com

BUEHLER GMBH - European and MESA Headquarters

In der Steele 2 • 40599 Düsseldorf
 Postfach 16 03 55 • 40566 Düsseldorf
 Telefon: (49) 211 974100 • Telefax: (49) 211 9741079
 www.buehler-met.de
 Email: info@buehler-met.de

BUEHLER FRANCE

Téléphone: 0800 89 73 71
 Télécopie: 0800 88 05 27
 www.buehler.fr
 Email: info@buehler.fr

BUEHLER UNITED KINGDOM

Telephone: 0800 707 6273
 Fax: 0800 707 6274
 www.buehler.co.uk
 Email: sales@buehler.co.uk

BUEHLER CANADA

10 Carlow Court, Unit #2
 Whitby, Ontario L1N 9T7
 Telephone: (905) 430-4684
 Fax: (905) 430-4647
 Sales Telephone: 1-800-268-3593
 Email: info@buehler.ca

BUEHLER, ASIA-PACIFIC

5/F Vogue Centre
 696 Castle Peak Road
 Lai Chi Kok, Kowloon
 Hong Kong, SAR, China
 Telephone: (852) 2307 0909
 Fax: (852) 2307 0233